

# ‘Party manifestos and policy costings in the Netherlands’

Wimar Bolhuis | The Hague / Cambridge

April 13, 2023



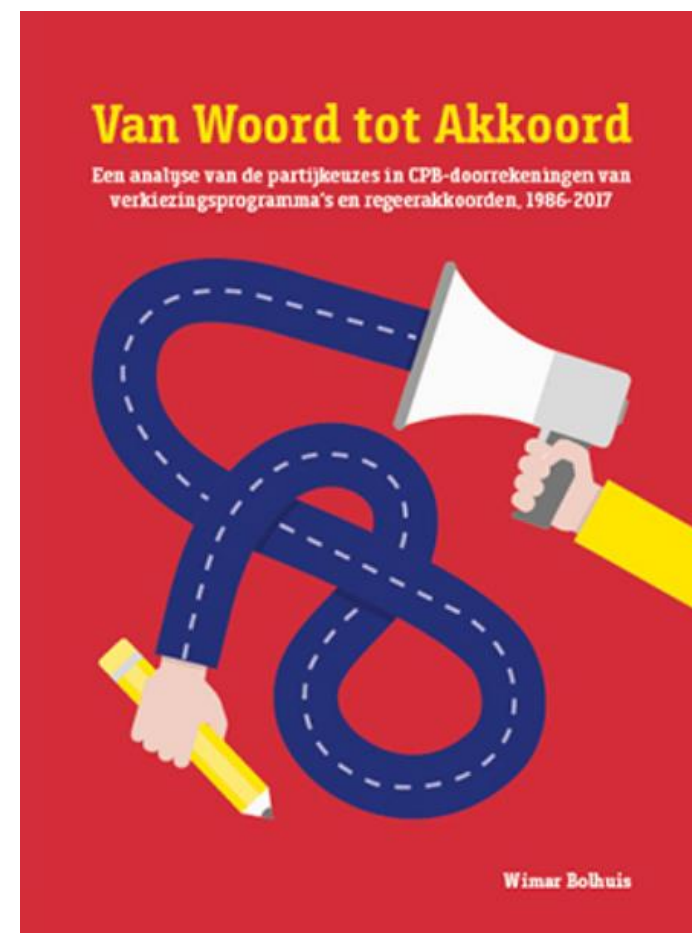
**Universiteit  
Leiden**  
The Netherlands

# Index

1. Charted Choices (CC) history 1986-2021 (10x)
  - CPB Netherlands Bureau for Economic Policy Analysis
  - History and goals CPB
  - History and popularity CC
2. Remarkable CC trends in party manifestos
  - Dutch electoral politics: tax, spending
3. Party manifestos CC <-> Coalition agreements CPB
  - Inside the 'black box' of formations
4. Conclusion & discussion



# Books, PhD, research



# 1. History CPB



- Founded in 1945 after WWII
- Jan Tinbergen first director
- Economists, technocratic policy making by experts
- Independent, neutral, accountable
- Rationalization public policy
  - Statistics Netherlands (CBS)
  - Social-Economic Council (SER)
  - The NL Scientific Council for Government Policy (WRR)
- Pieter Hasekamp director (former Min FIN)

# Goal CPB: evidence based policy



- **Economic forecasts**

Quarterly and before national elections  
(MLT base scenario next 4Y, for CC & CA)

- **Economic policy advice**

Asked and unasked

# Chartered Choices history

- **1986 - CDA, PvdA, VVD (3)**
  - Small: Financial economic part of their manifestos
- **2021 – VVD, CDA, D66, GL, SP, PvdA, CU, SGP, DENK, 50Plus (10)**
  - Extended: taxes, premiums, public expenditures, disposable income, macro economics etc
- **Unique in the world**
  - Political parties participate voluntarily (and not all of them)
  - Special: civil servants check politicians and politicians accept MLT base line forecast next 4Y
  - Outcomes of the assessments will become public, after
  - Title: ‘Chartered Choices’ (‘Keuzes in Kaart’ (KIK))
- **1986-now – Coalition agreements also analysed by CPB**

# Popularity 1986-2021

| Editie        | Aantal partijen | % Zetels Tweede Kamer | Aantal maatregelen per partij | Aantal pagina's | Publicatie samen met PBL? |
|---------------|-----------------|-----------------------|-------------------------------|-----------------|---------------------------|
| KiK 1987-1990 | 3               | 85                    | Nb                            | 25              | Nee                       |
| KiK 1990-1994 | 4               | 95                    | Nb                            | 94              | Nee                       |
| KiK 1994-1998 | 5               | 95                    | 46                            | 222             | Nee                       |
| KiK 1999-2002 | 5               | 87                    | 54                            | 161             | Nee                       |
| KiK 2003-2006 | 8               | 100                   | 42                            | 228             | Nee                       |
| KiK 2008-2011 | 8               | 81                    | 52                            | 218             | Nee                       |
| KiK 2011-2015 | 9               | 99                    | 254                           | 222             | Ja                        |
| KiK 2013-2017 | 10              | 99                    | 247                           | 456             | Ja                        |
| KiK 2018-2021 | 11              | 89                    | 106                           | 374             | Nee                       |
| KiK 2022-2025 | 10              | 82                    | 146                           | 370             | Nee                       |

# Livestream presentation 2021





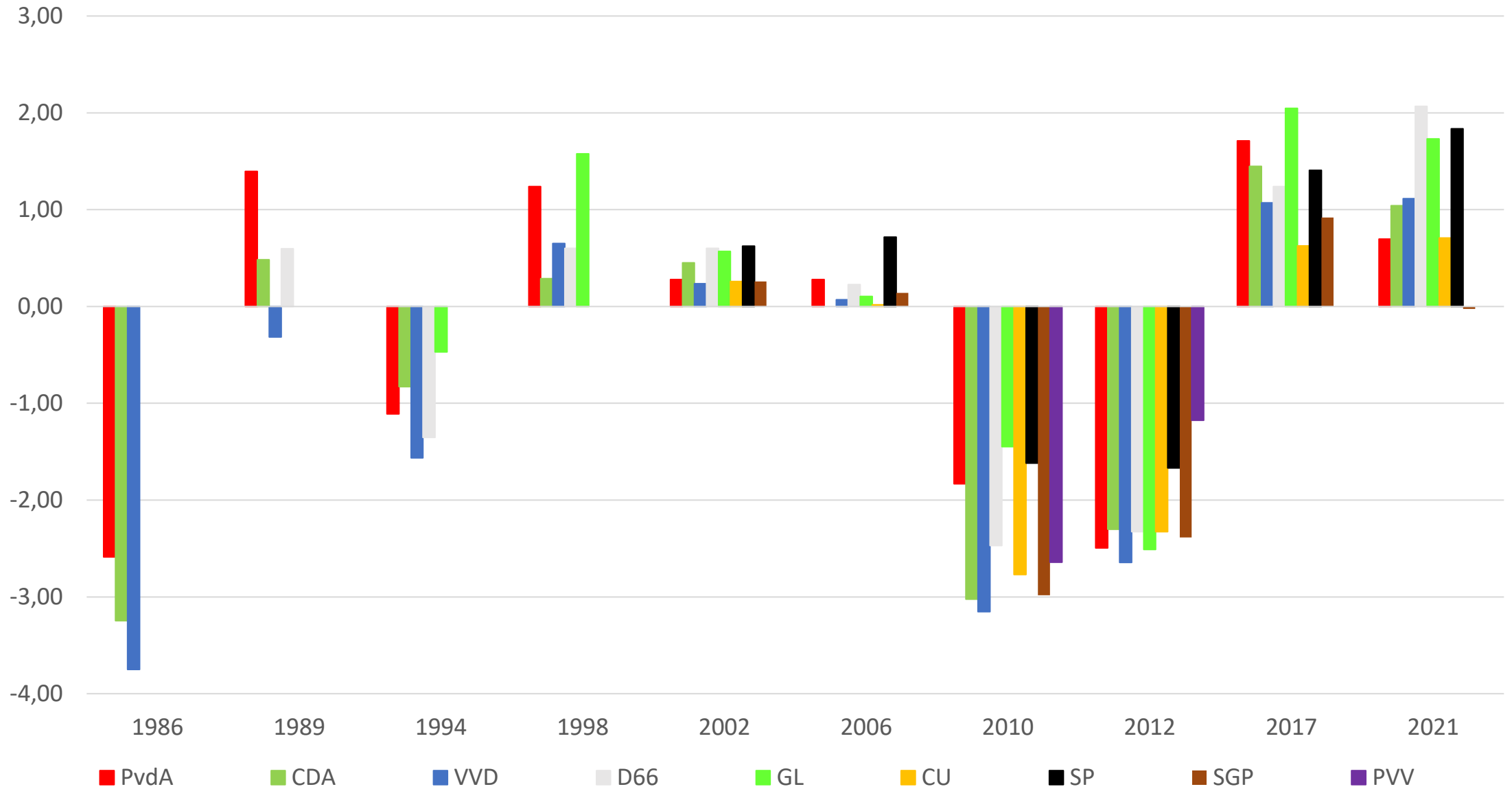
# Aim CC: To 'discipline' politicians



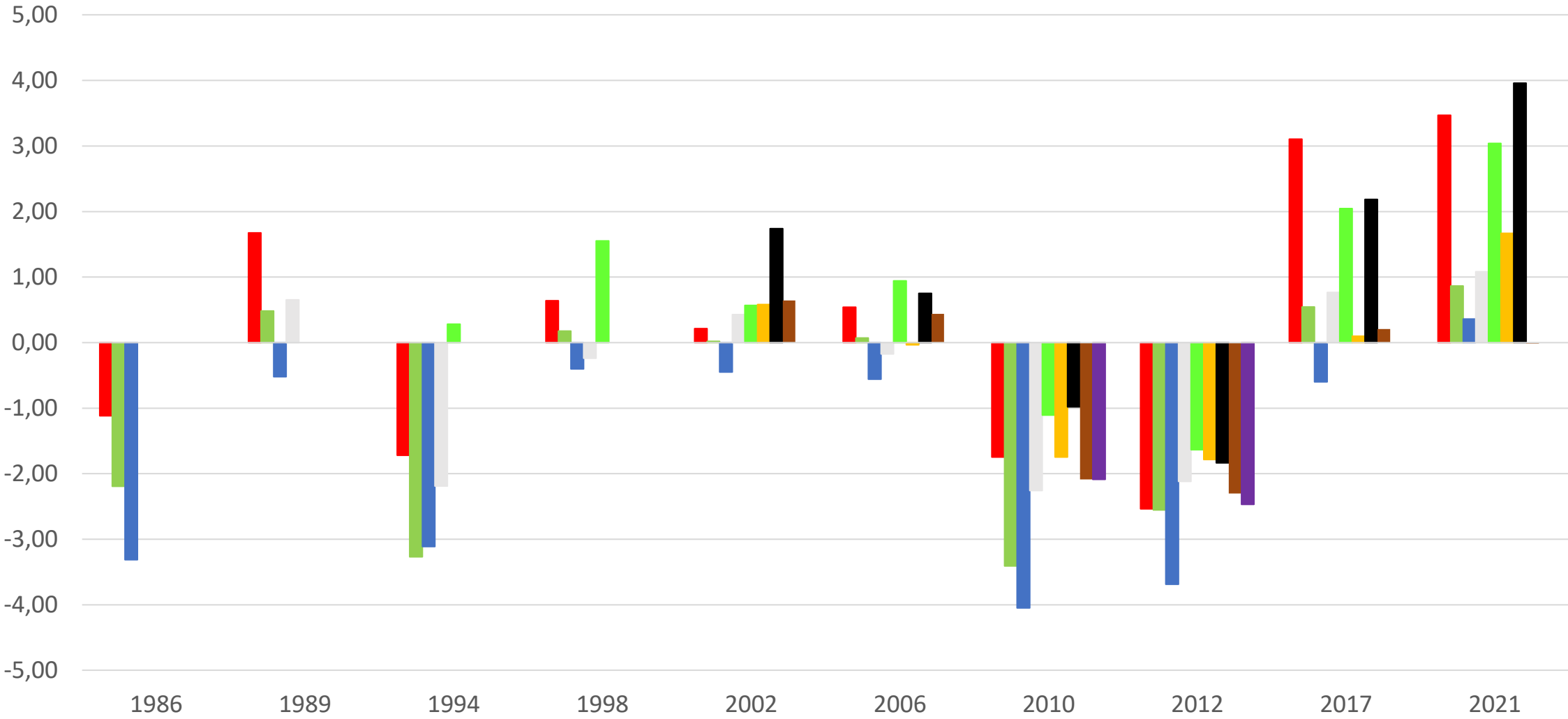
## **2. Party manifestos**

Dutch electoral politics: tax and spending

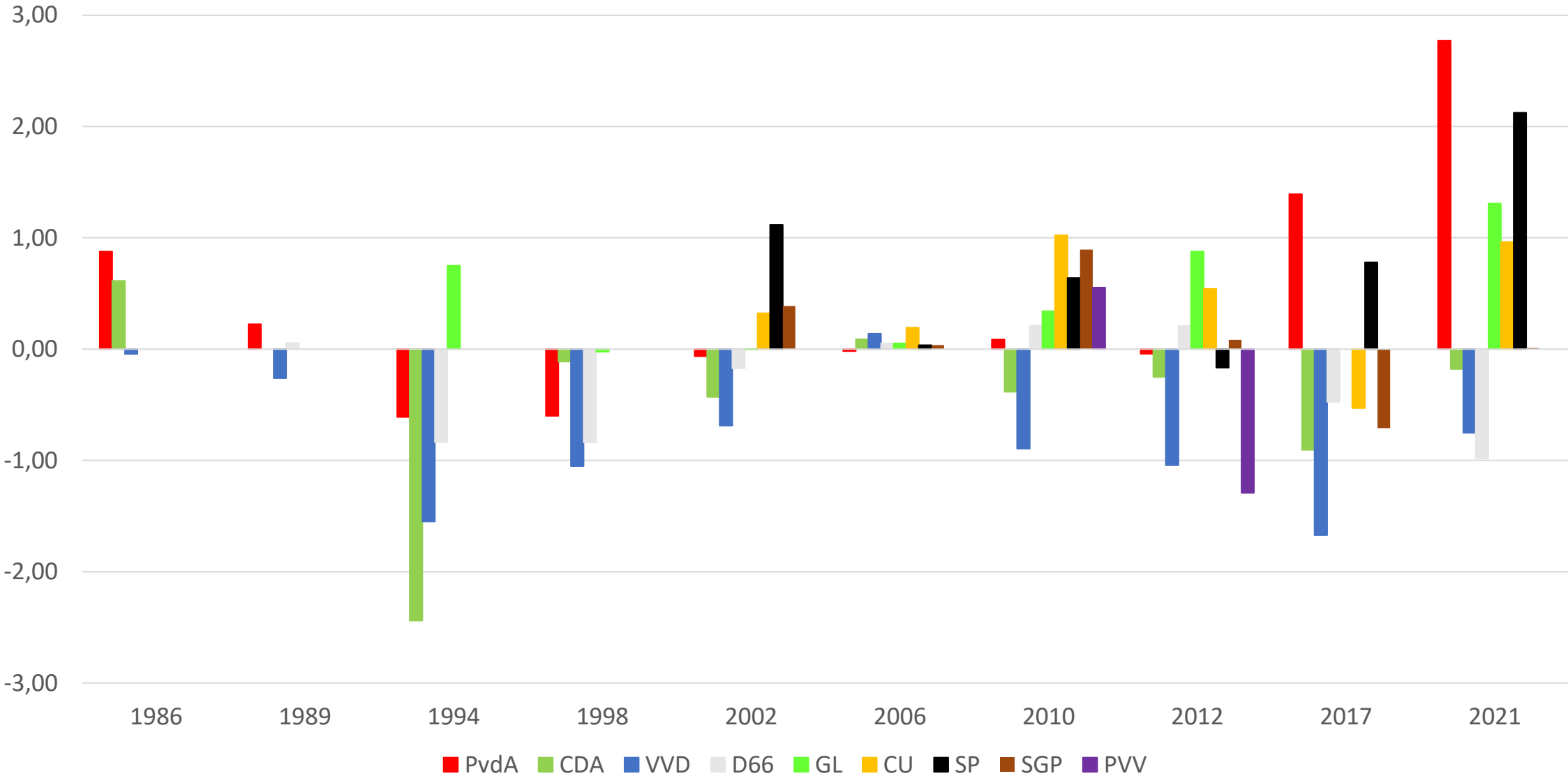
# Expenditures – Revenues Total (% GDP, ex-ante)



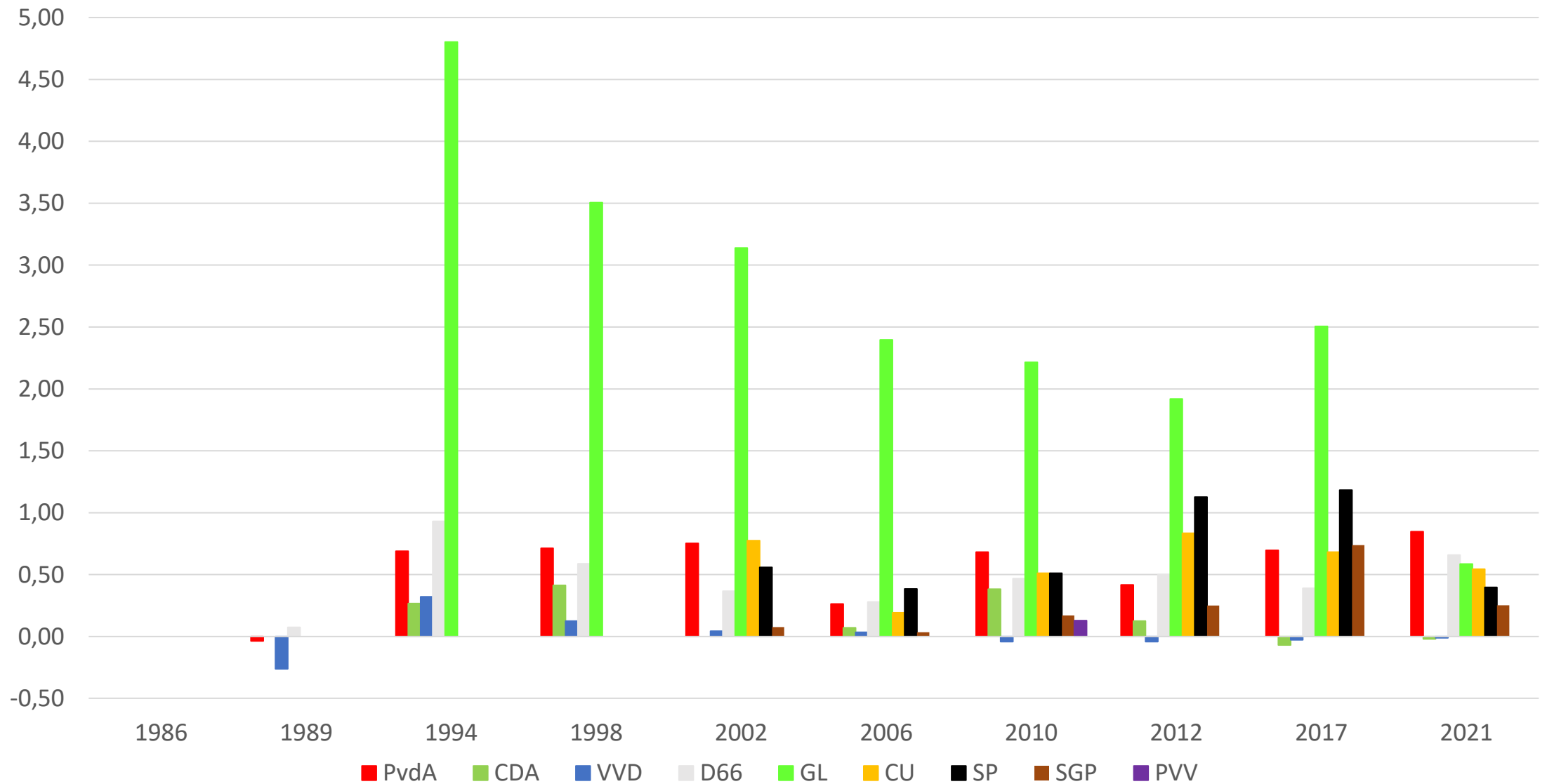
# Public Expenditures (% GDP)



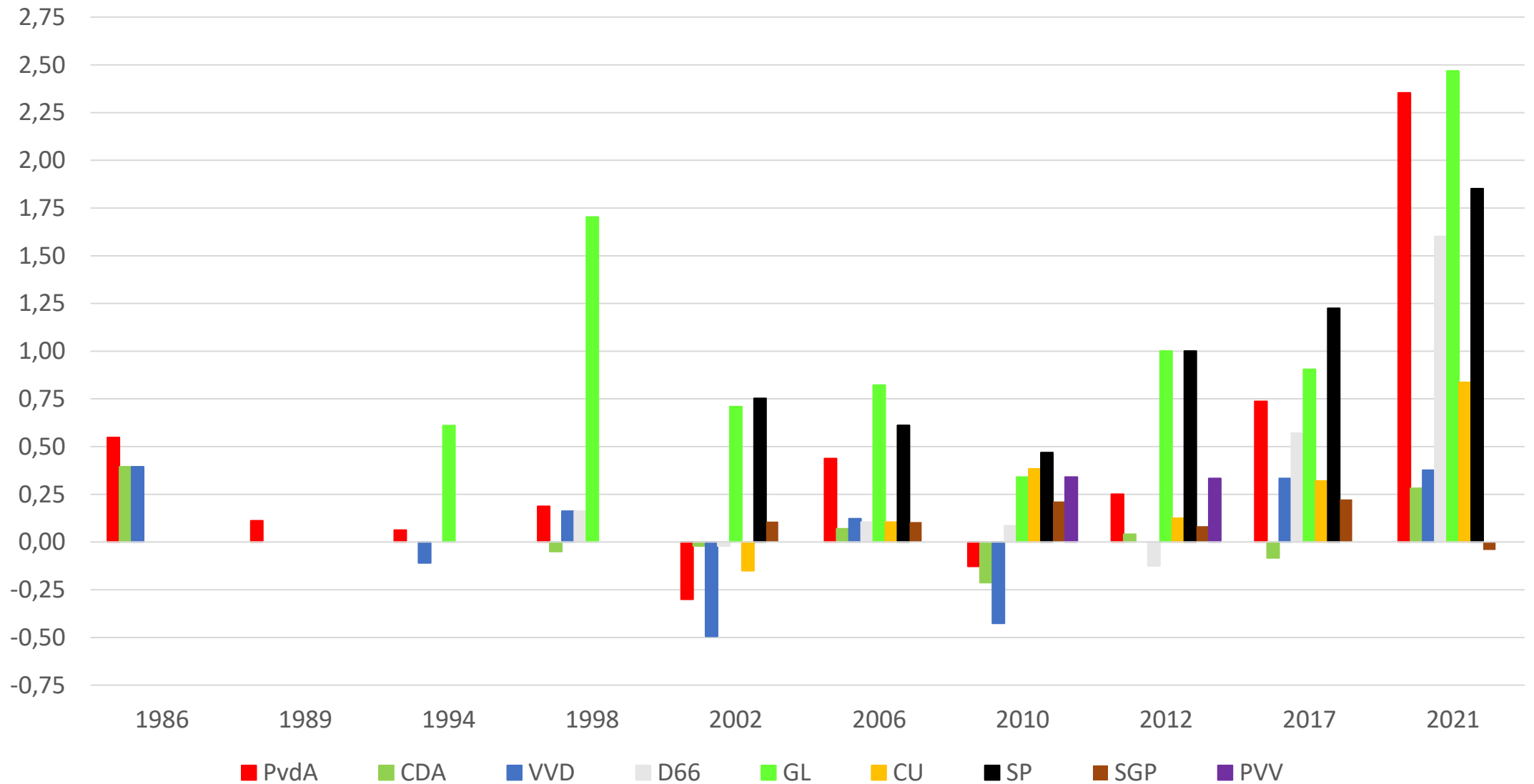
# Total Revenues / Tax Burden (% GDP)



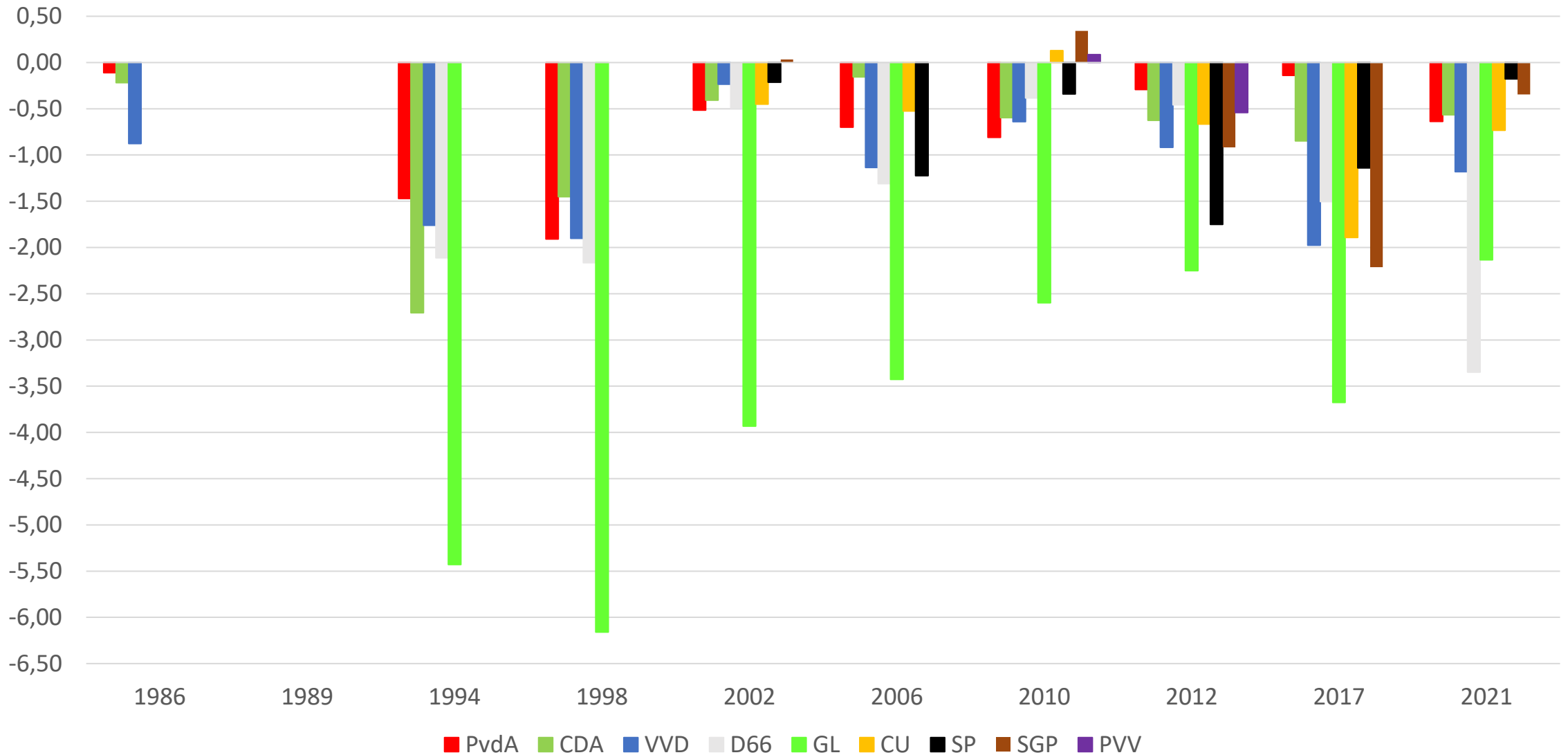
# Taxes Environmental Pollution (% bbp)



# Taxes Capital and Profits (% GDP)

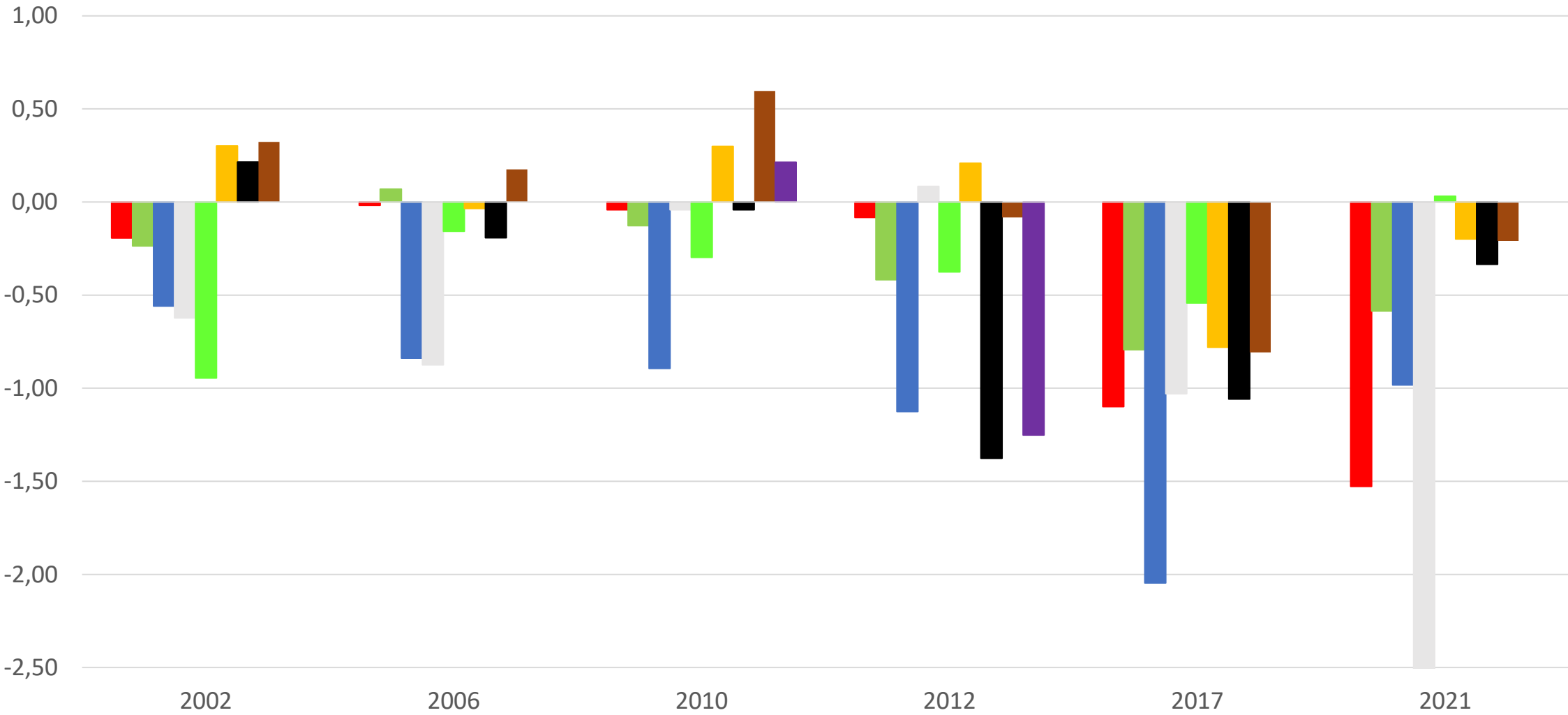


# Taxes Labor and Income (% GDP)

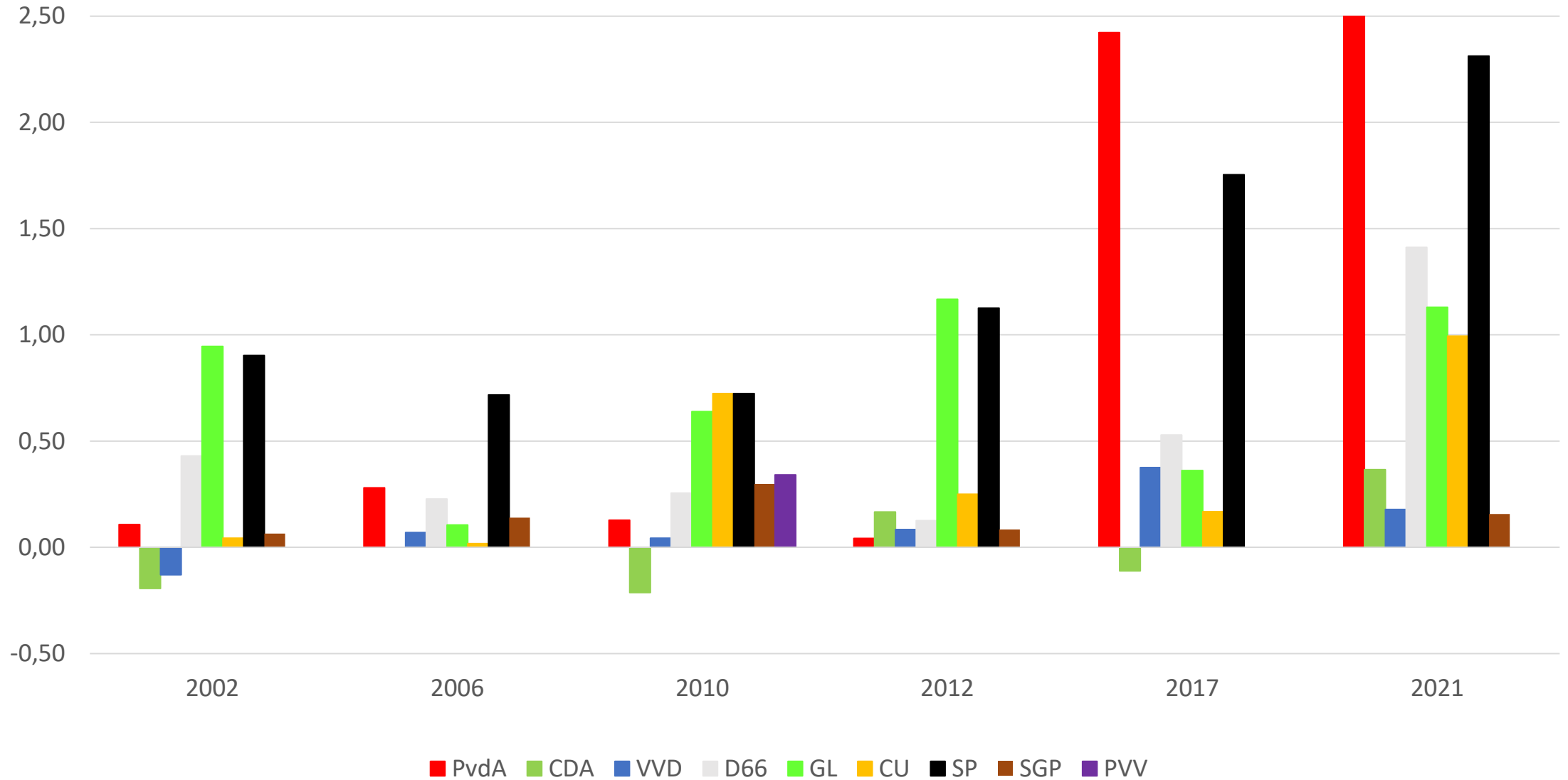




# Tax Burden for Households (% GDP)



# Tax Burden for Businesses (% GDP)



# Party manifestos CC <-> Coalition agreements CPB

Inside the 'black box' of formations...

PRE ELECTIONS >  
campaign parlement

AFTER ELECTIONS  
> formation government)



**BLACK  
BOX**



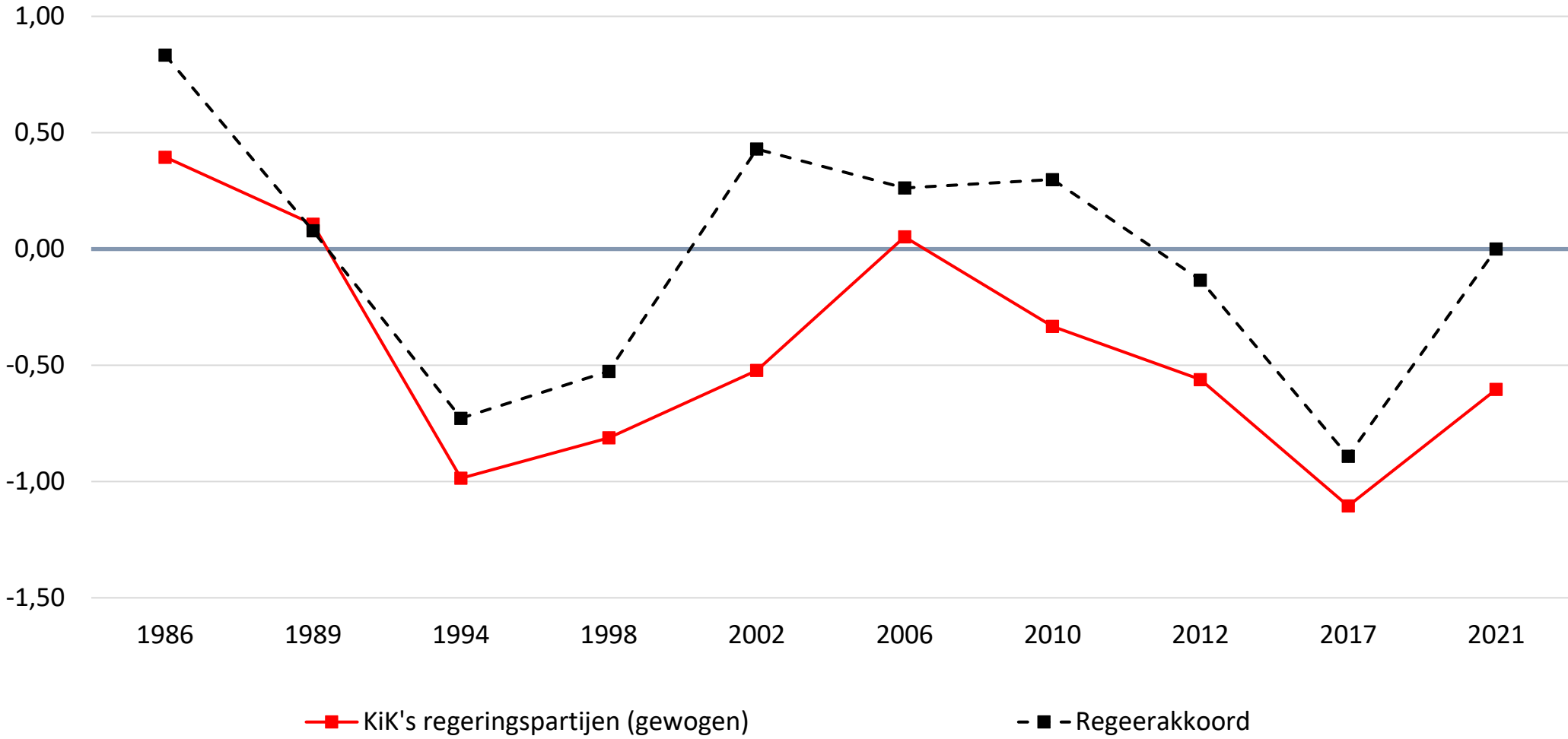
# Use CPB's CC & CA analysis

- **Deviations CA from the weighted average of the government parties in CC** based on their number of seats in the parliamentary elections
- **Reference measure** for CA compared to CC
- To indicate relationship  $\rightarrow r = \text{correlation}$  &  $\Delta = \text{mean difference}$
- **Zero line = MLT base line forecast (no policy)**
- Research question and design does not address negotiation theory
- $\neq$  premier bonus, junior partner, cross-file deals, ideological distance
- **I now only present the striking results!!!**
- Majority of variables correspond to reference measure (+- 75%)

# TAXES!

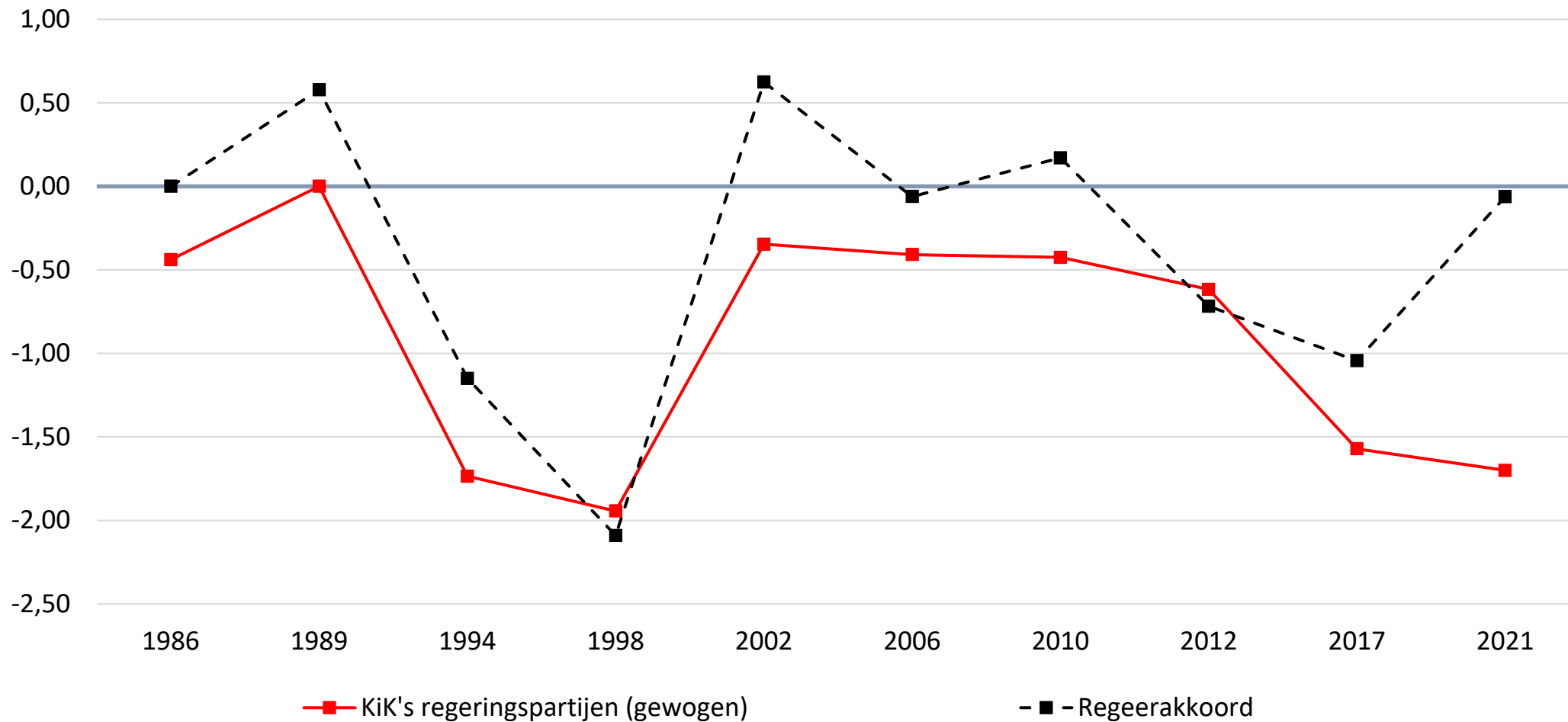


### Total Revenues / Tax Burden (% GDP)



R = 0.86  
 $\Delta = +0.40$  %-PT GDP

### Taxes Labor and Income (% GDP)

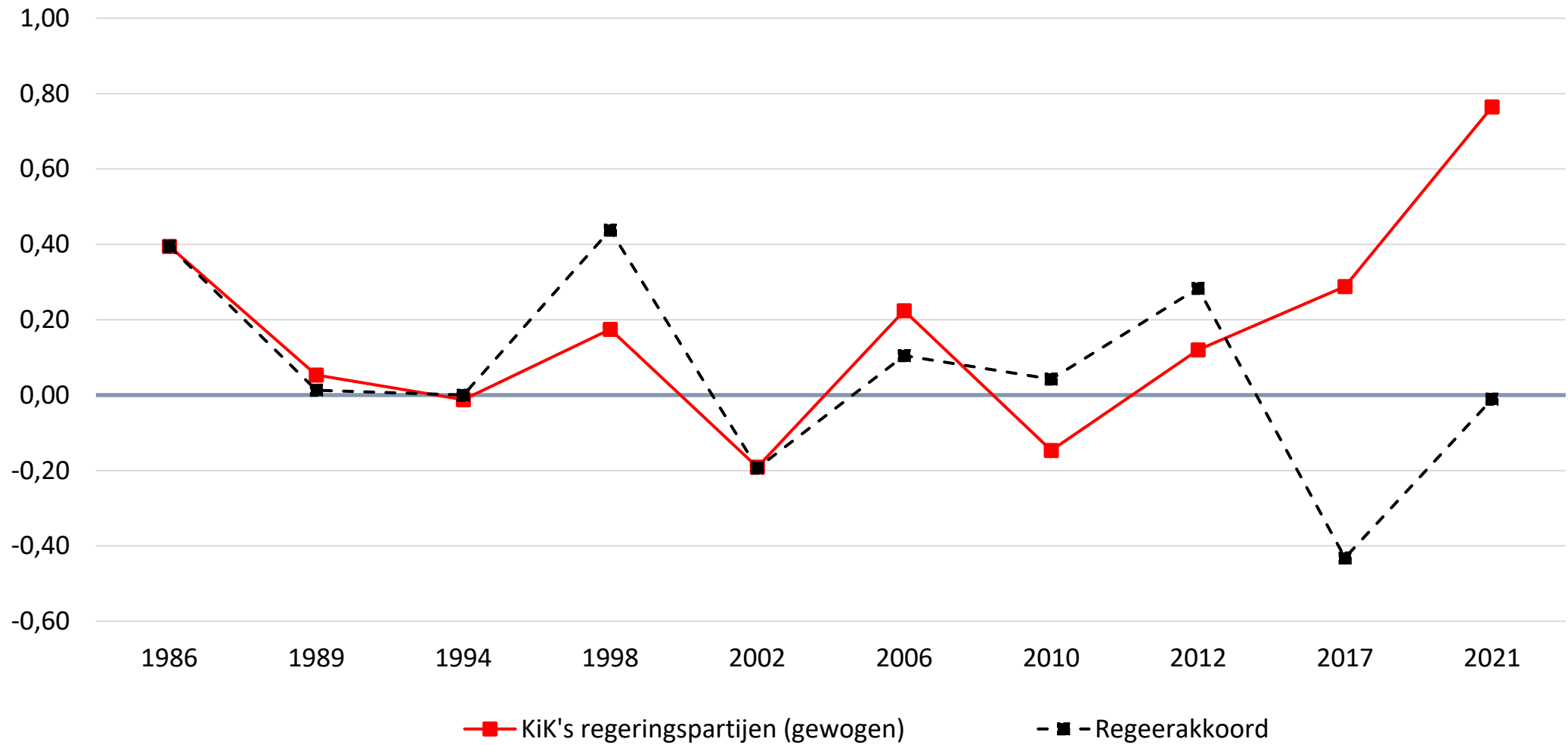


R = 0.81

$\Delta = +0.54$  %-PT GDP



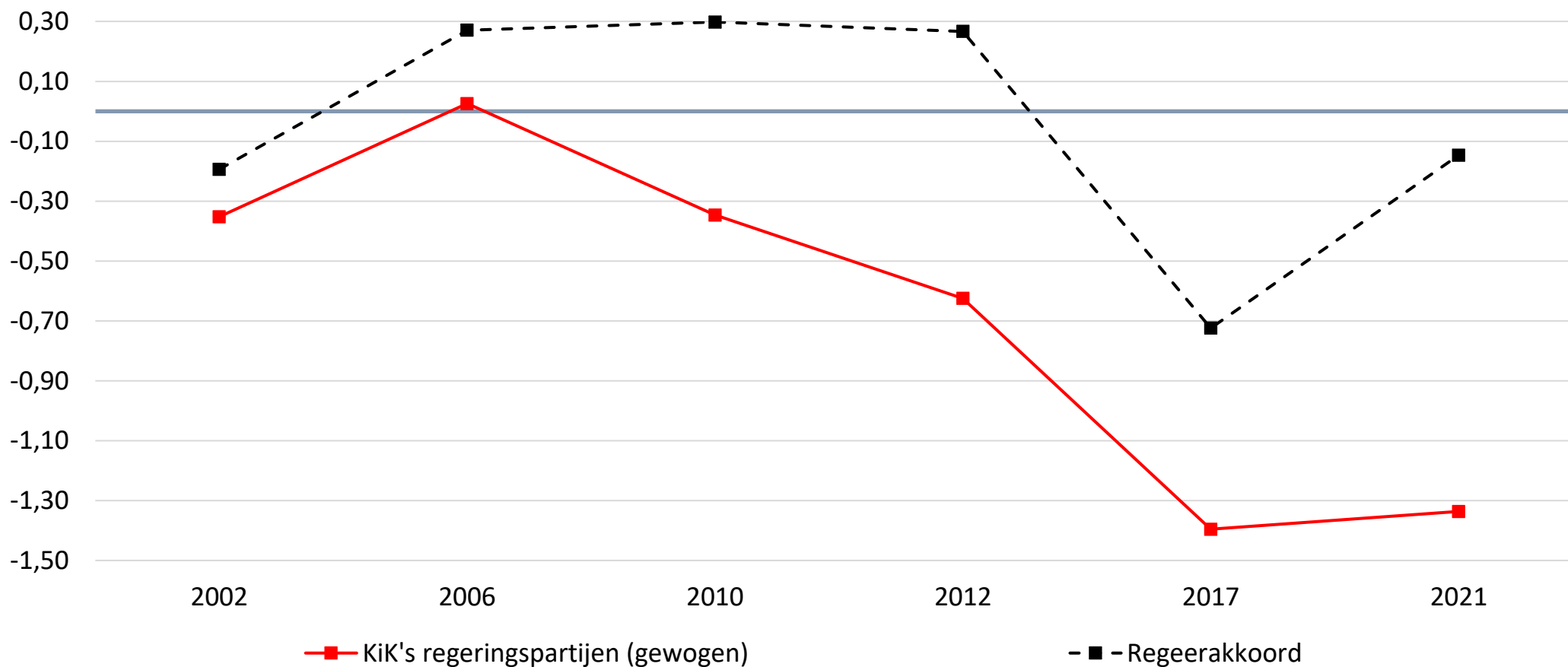
### Taxes Capital and Profits (% GDP)



R = 0.12

$\Delta$  = -0.10 %-PT GDP

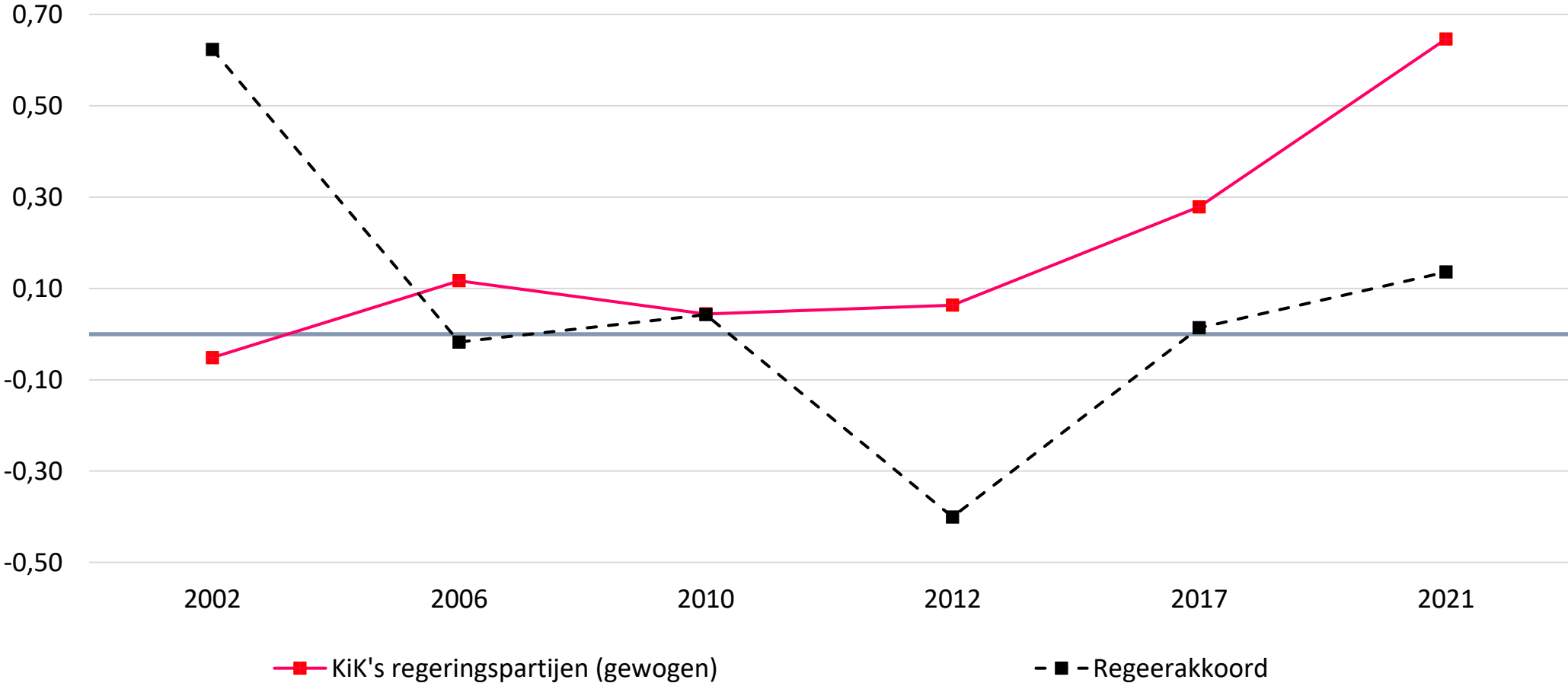
### Tax Burden for Households (% GDP)



R = 0.74

$\Delta$  = +0.63 %-PT GDP

### Tax Burden for Businesses (% GDP)



R = -0.10

$\Delta$  = -0.12 %-PT GDP



EXPENDITURES!

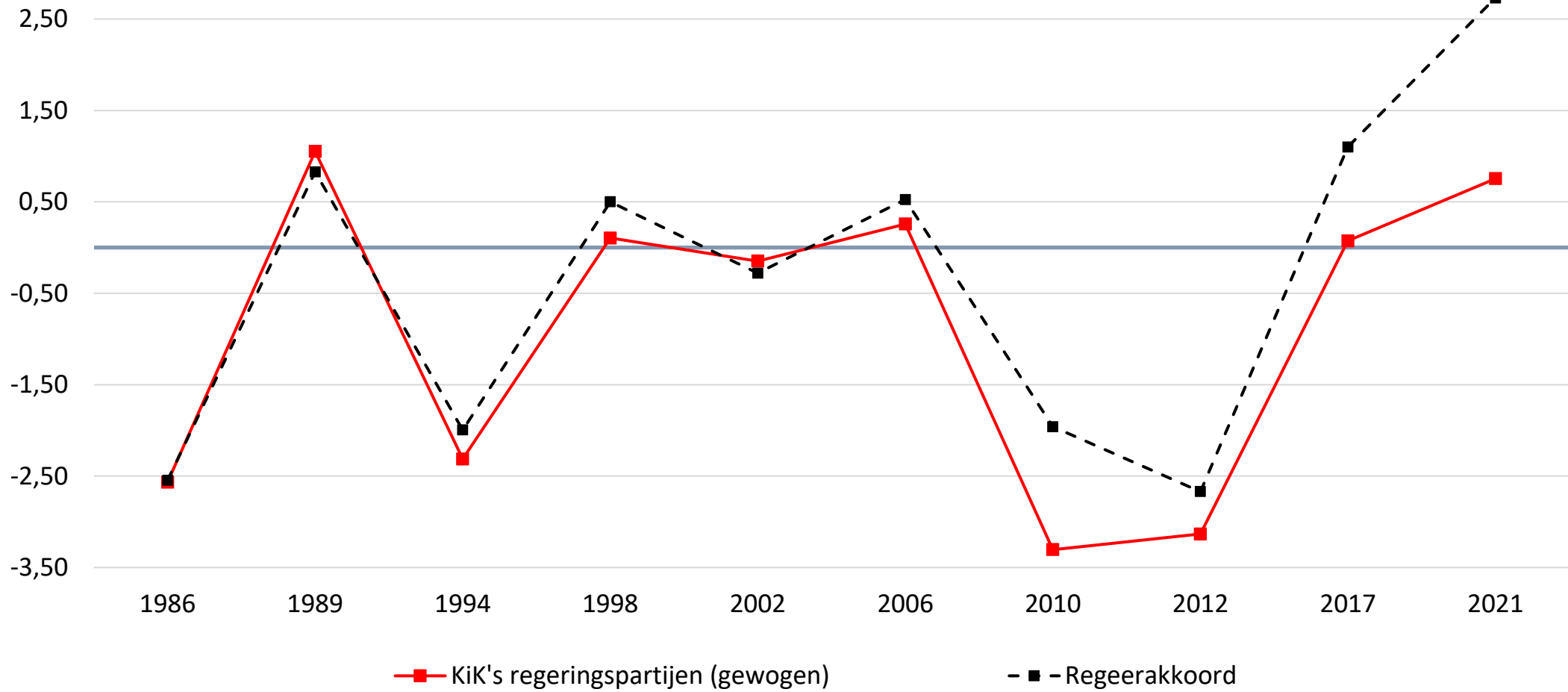
**BEZUINIGEN  
IS IETS VOOR MENSEN  
DIE NIET MET**

**TEVEEL GELD  
UITGEVEN  
KUNNEN OMGAAN**

*Loesje*

Postbus 1045 6801 BA Arnhem [www.loesje.nl](http://www.loesje.nl)

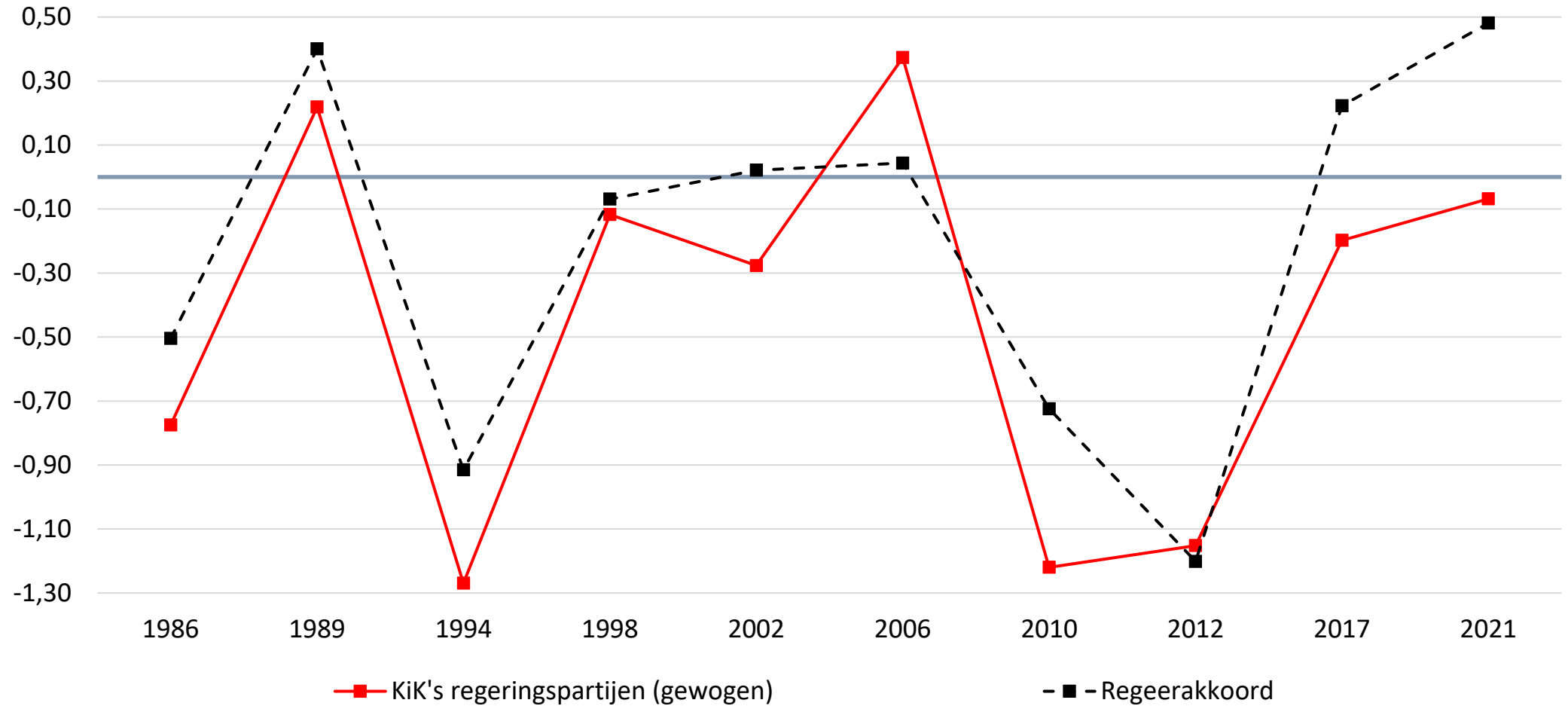
### Total Public Expenditures (% GDP)



$r = 0.92$

$\Delta = +0.55$  %-pt GDP (REVENUES = +0.40)

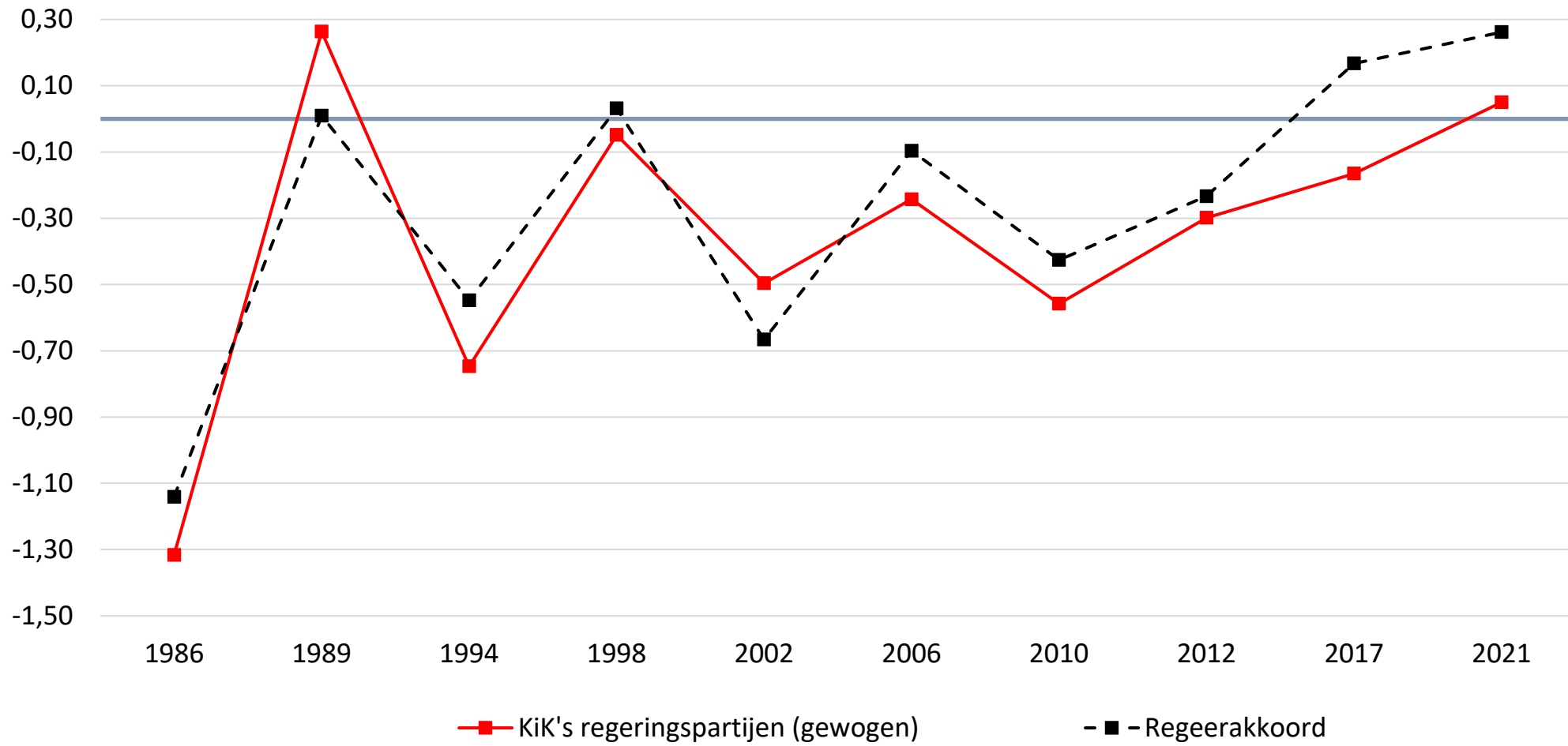
### Social Security Expenditures (% GDP)



R = 0.90

$\Delta = +0.22$  %-PT GDP

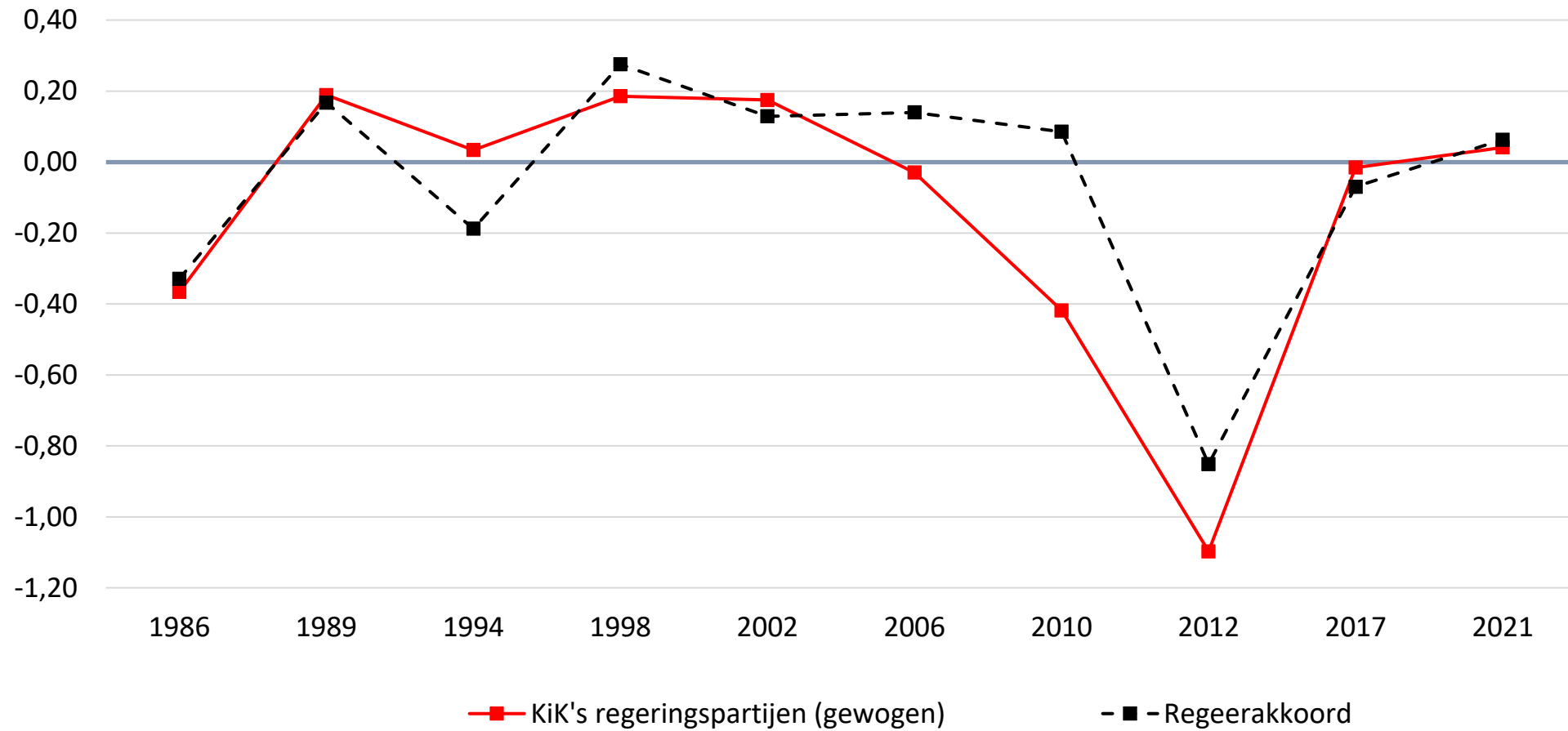
### Public Administration Expenditures (% bbp)



R = 0.92

$\Delta$  = +0.09 %-PT GDP

### Health Care Expenditures (% GDP)

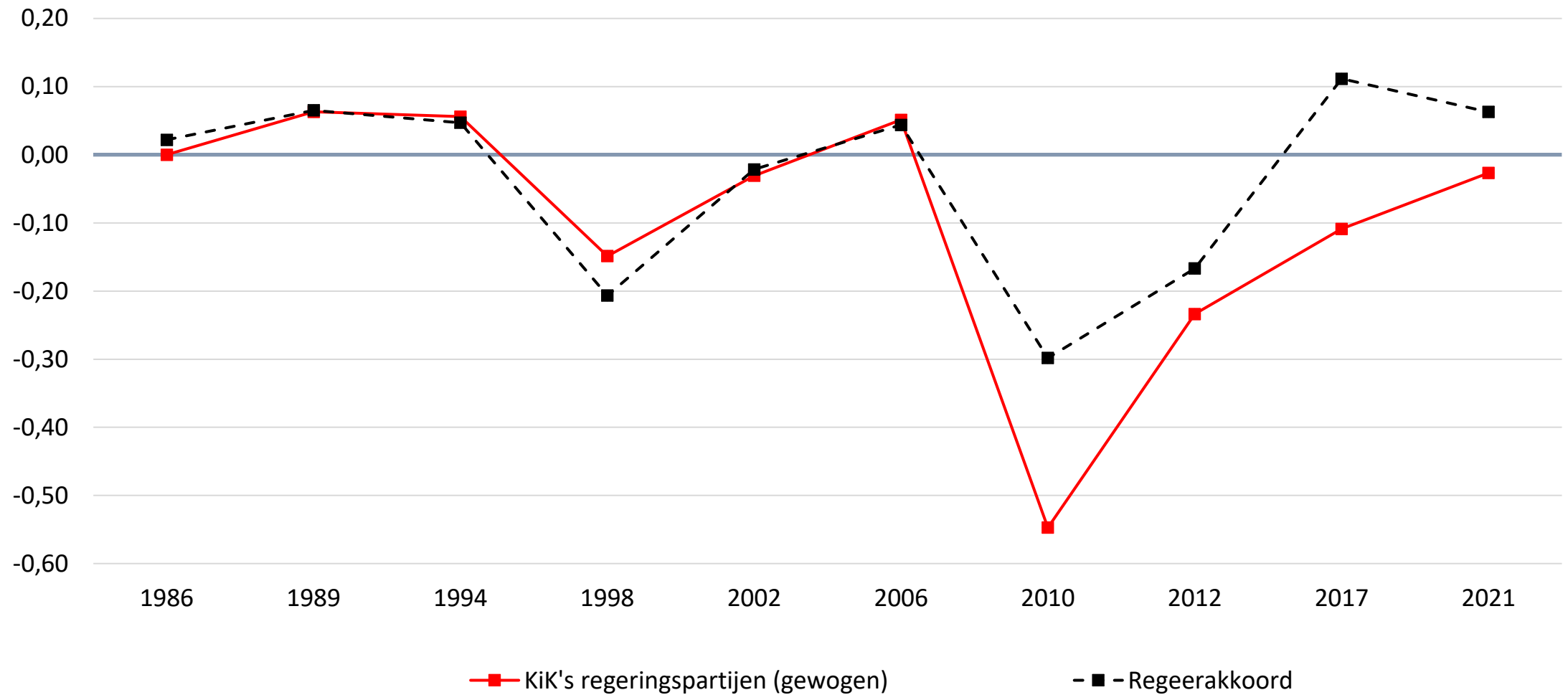


R = 0.87

$\Delta = +0.07$  %-PT GDP



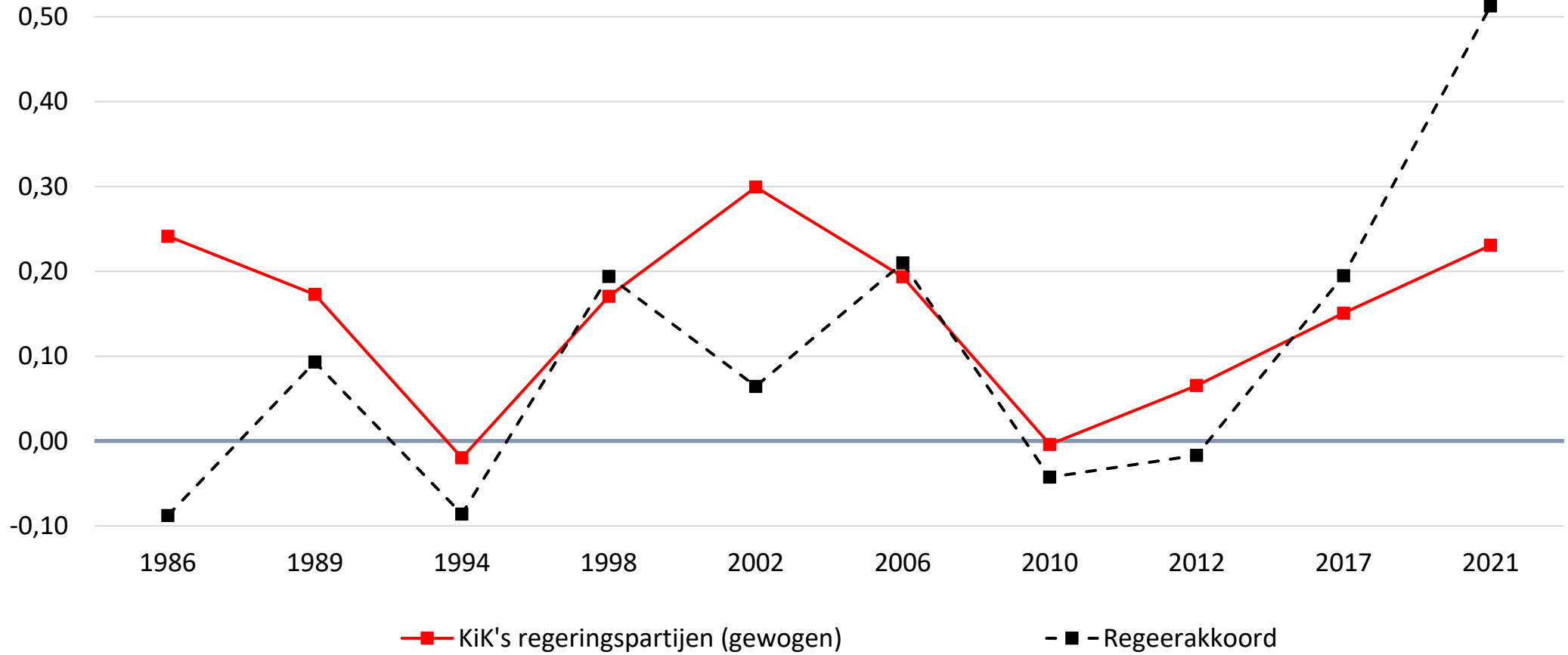
## International Development Cooperation Expenditures (% GDP)



R = 0.85

$\Delta$  = +0.06 %-PT GDP

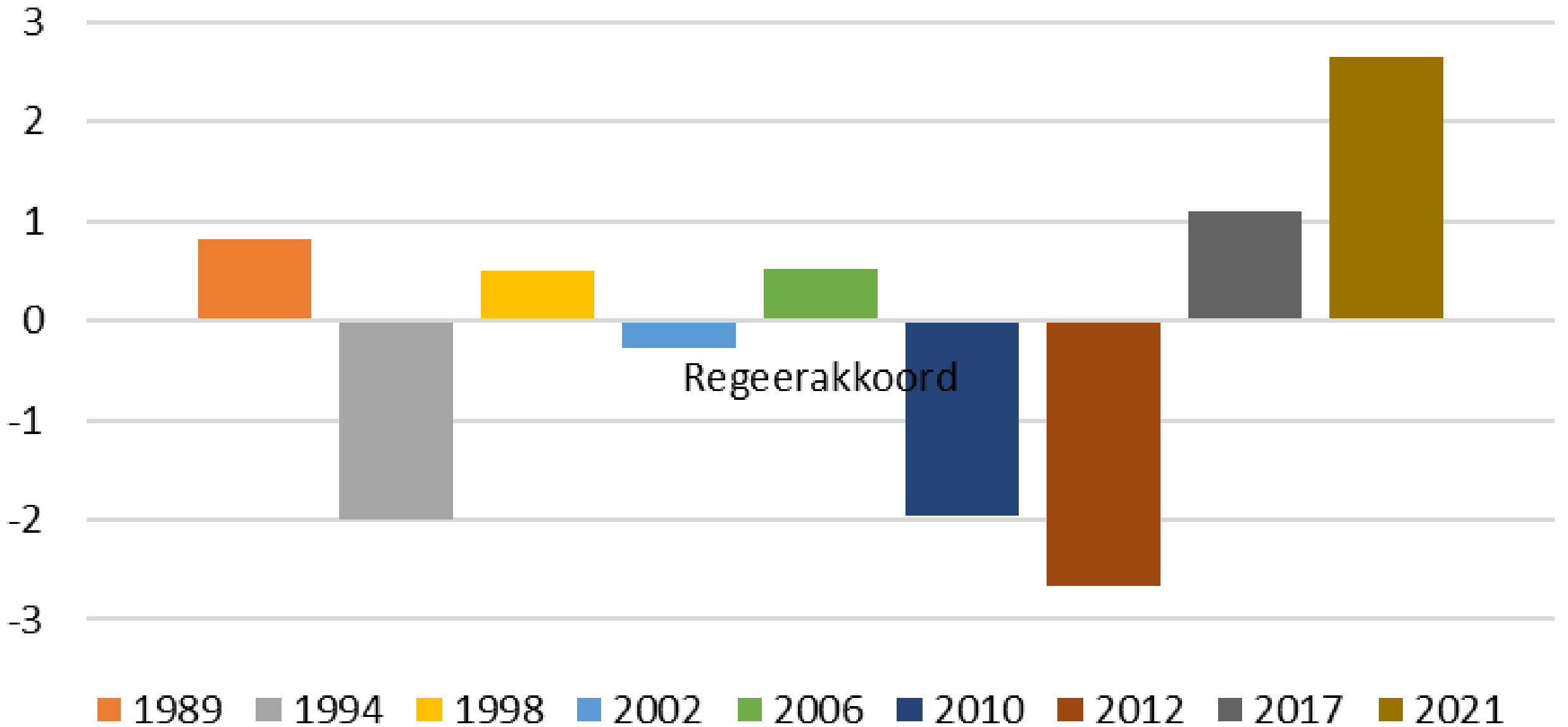
### Education Expenditures (% GDP)



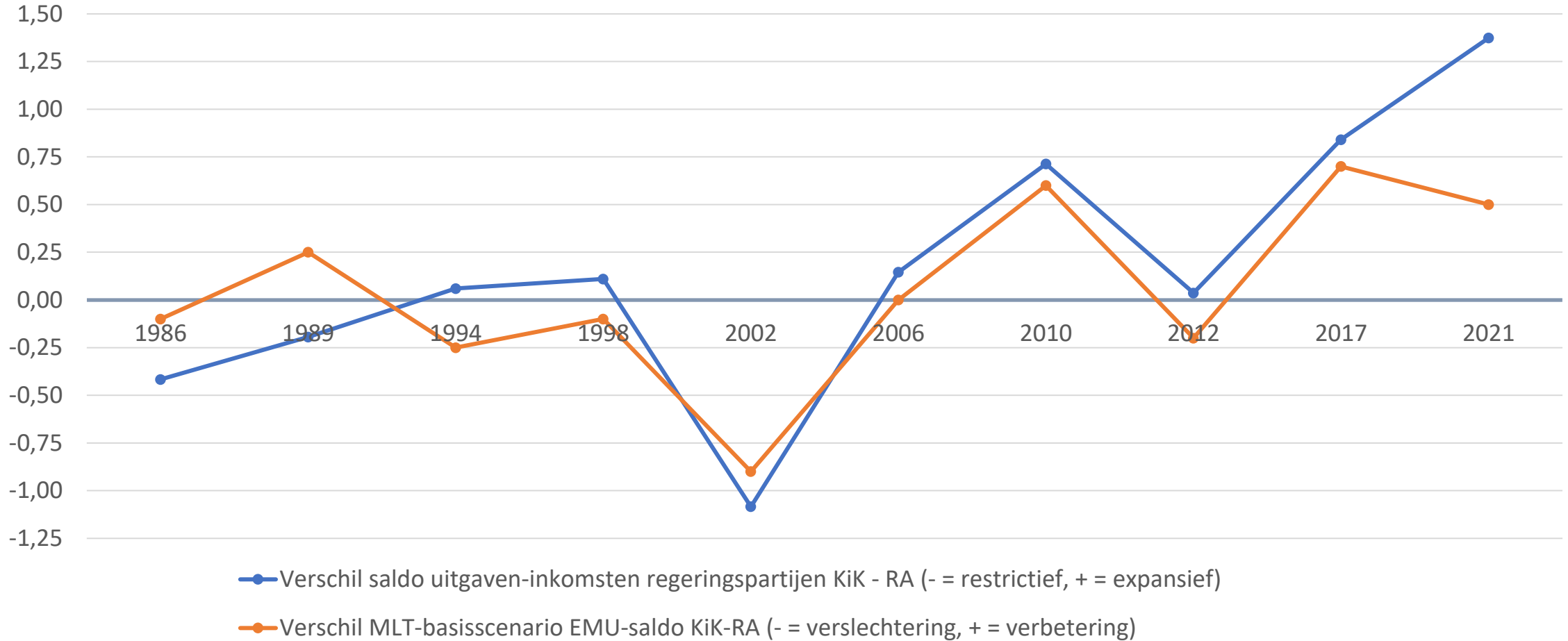
R = 0.46

$\Delta$  = -0.05 %-PT GDP

# Net Expenditures Total (ex-ante, % GDP)



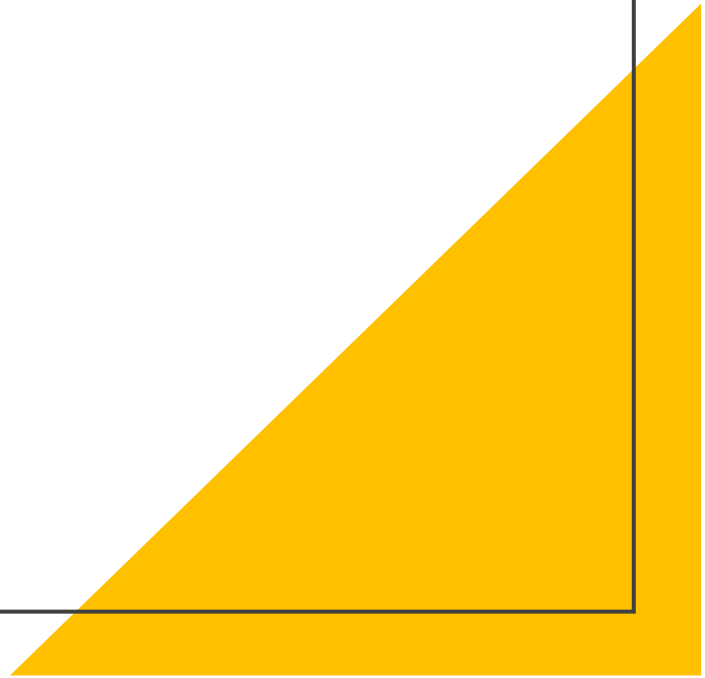
## Strong effect update MLT Base Line Government Deficit on political budget decisions in CA (% GDP)!



R = 0.86

$\Delta$  = +0.16 %-PT GDP (EXPENDITURES-REVENUES COALITION)

$\Delta$  = +0.05 %-PT GDP (CHANGE MLT SCENARIO DEFICIT)



# Coalition agreements result into

- Lower economic growth ( $\Delta = -0.04\%$ -pt GDP)
- Higher unemployment ( $\Delta = +0.09\%$ -pt)
- Larger EMU-budget deficit ( $\Delta = -0.19\%$ -pt GDP)
- Worse sustainability public finance ( $\Delta = -0.84\%$ -pt GDP)

.. than the assessed party manifestos in Charted Choices

- **Do formations cause efficiency losses?**  
- (trade off justice  $\leftrightarrow$  efficiency)

# Conclusions

- Higher Total tax burden vs. higher Total public expenditures
- Expenditures: Public Administration, Social Security, Health Care, IDC vs Education
- Taxes: higher taxes Households vs. lower taxes Businesses
- Purch. power: higher social security Beneficiaries, lower middle/high Working class
- Macros: GDP, Unemployment & Budget Balance slightly worse, Sustainability 'down'

# Theory

- Negotiations between multiple parties always cost taxpayers' money? (vetos)
- Is there simply political inactivity? (status quo bias, loss aversion)
- Is the employer lobby powerful in Dutch formations? (calendar setting)
- Do politicians behave differently before and after elections? (political economy)
- More extreme promises in campaign to attract votes? (distinctive)
- In formation 'normalize' because of social wishes? (support base)
- Campaign focus on 'middle class' purchasing power? (vote maximization)
- After formation, they want to be 'a cabinet for all Dutch people'? (debate)



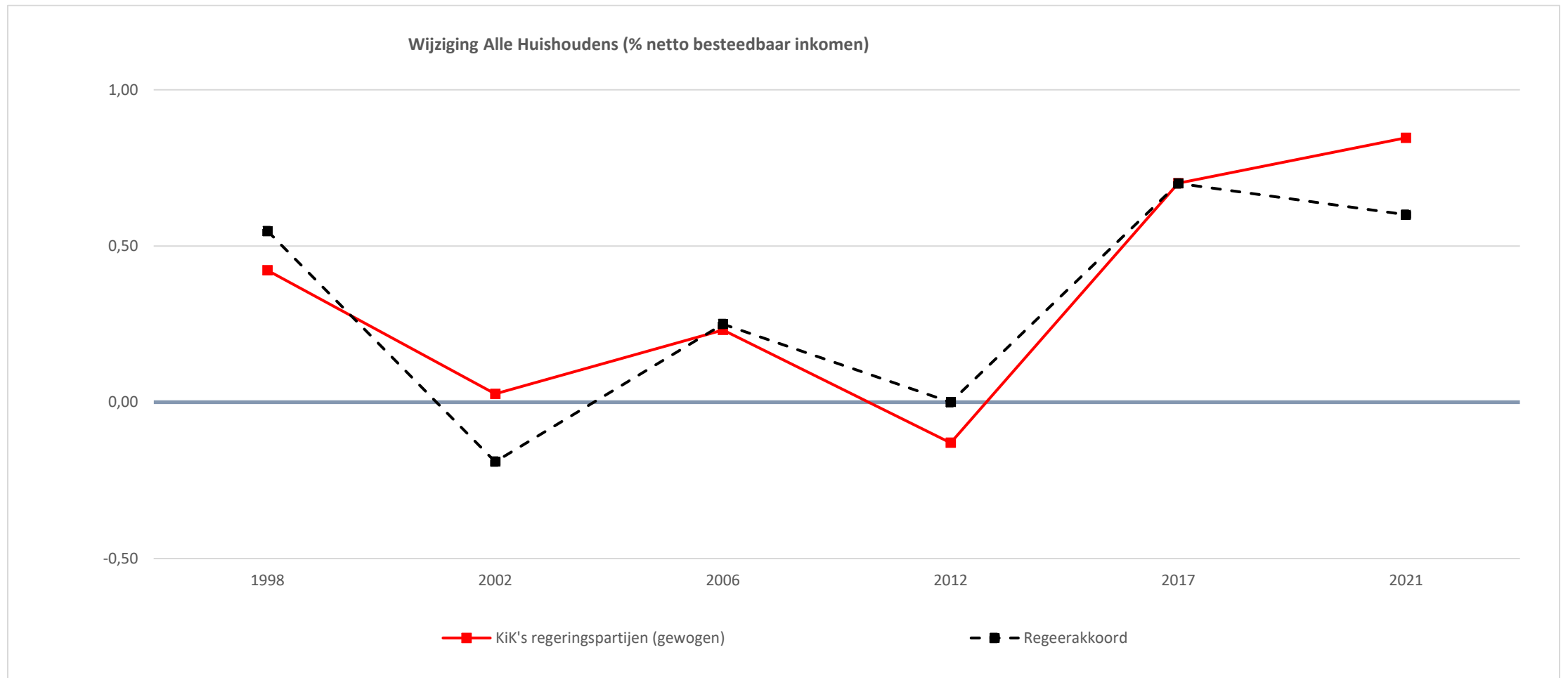
# Thank you for your attention!



**Universiteit  
Leiden**  
The Netherlands

Disposable  
Income!

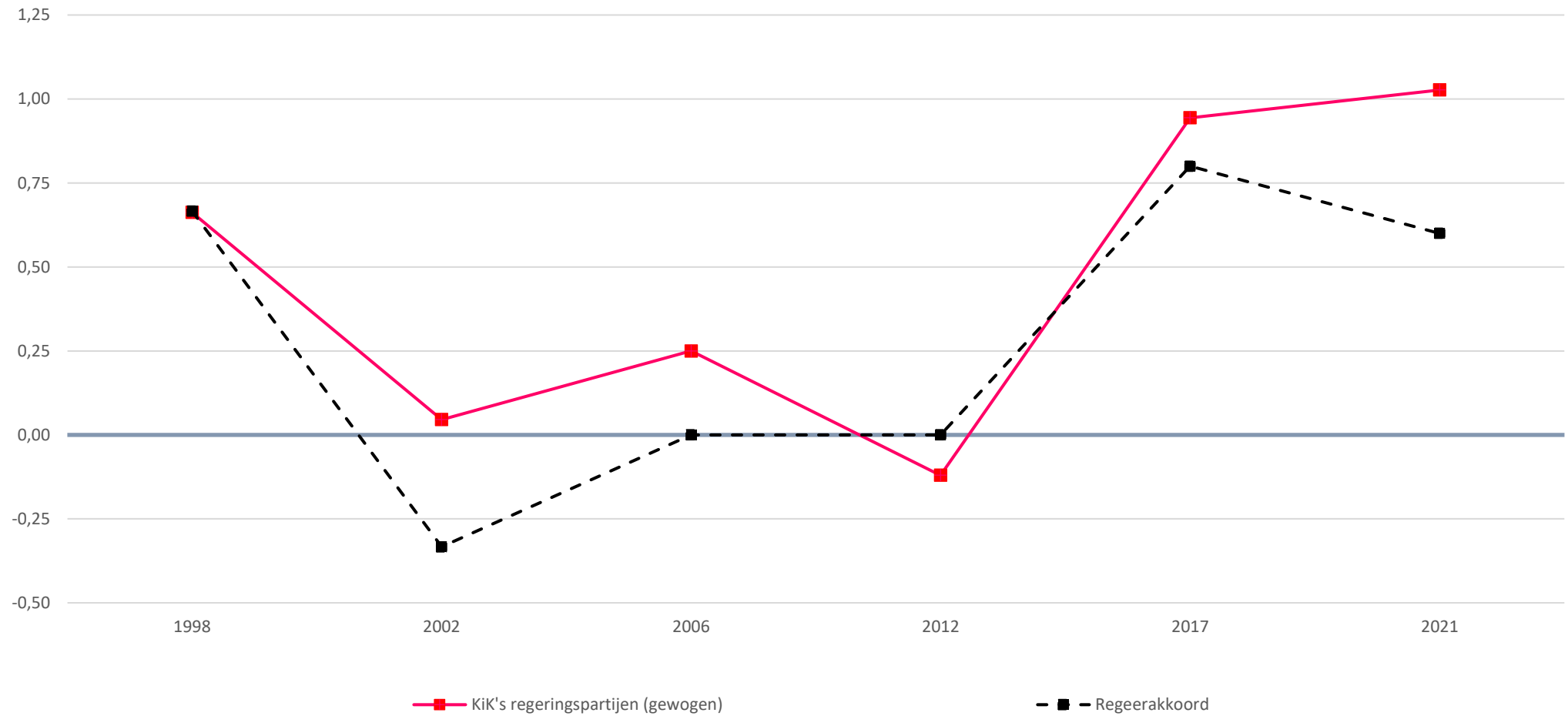




$R = 0.90$

$\Delta = -0.03 \text{ \% -PT NDI}$

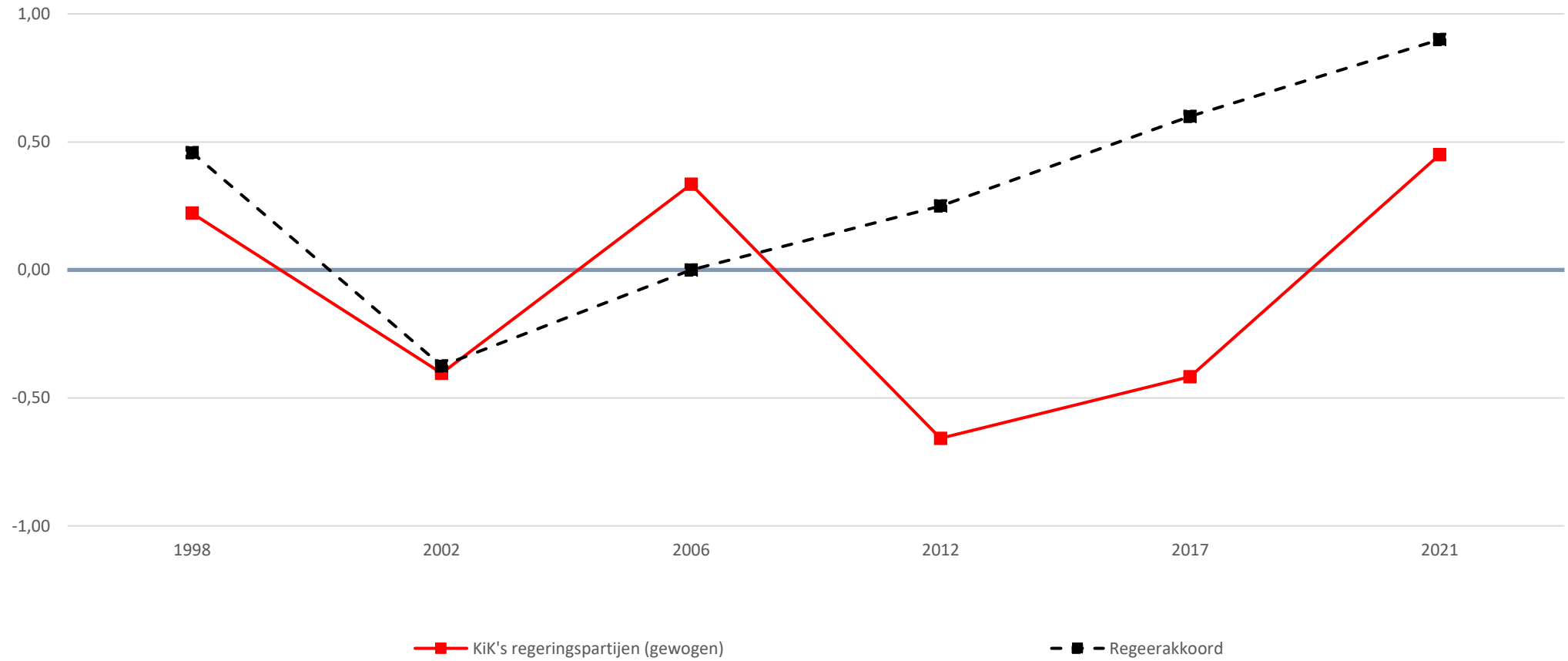
Wijziging Werkenden (% netto besteedbaar inkomen)



R = 0.90

$\Delta$  = -0.18 %-PT NDI

Wijziging Uitkeringsgerechtigden (% netto besteedbaar inkomen)



R = 0.37

$\Delta = +0.38$  %-PT NDI

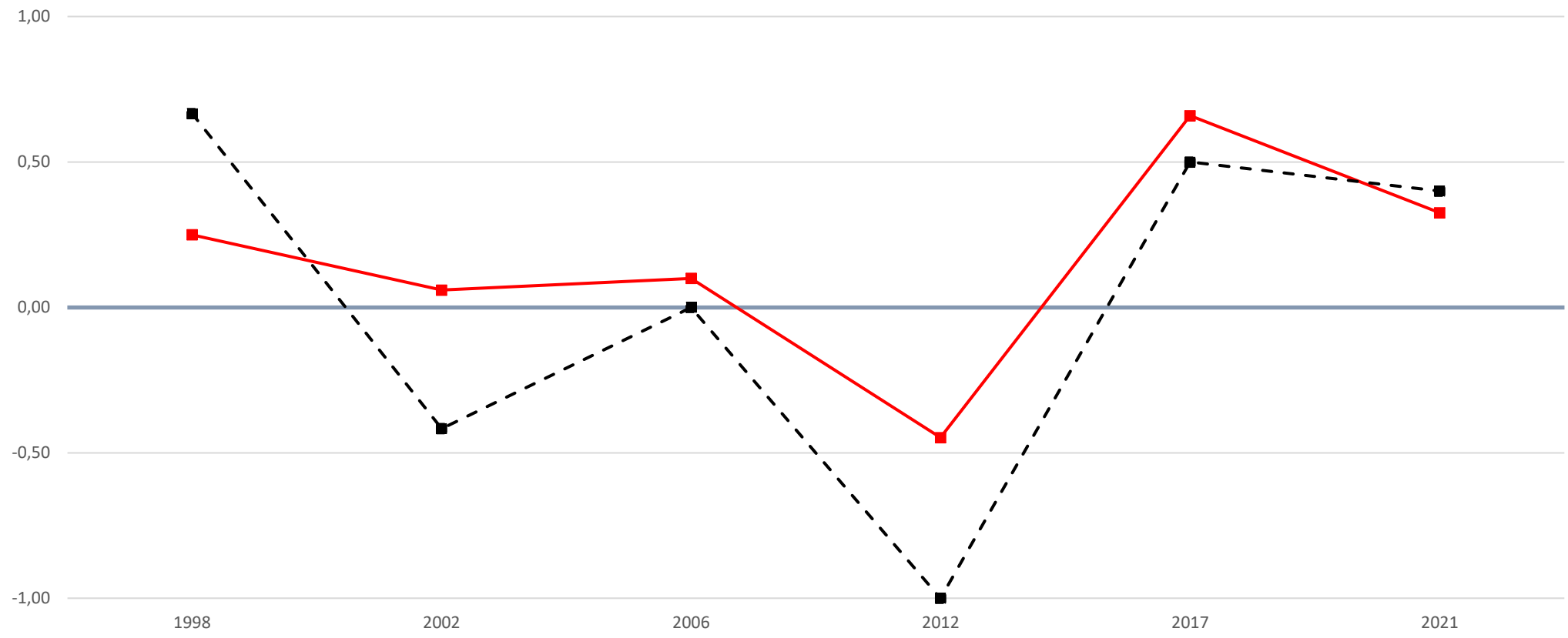
Wijziging Midden inkomens (% netto besteedbaar inkomen)



R = 0.90

$\Delta$  = -0.22 %-PT NDI

Wijziging Hoge inkomens (% netto besteedbaar inkomen)



—■— KiK's regeringspartijen (gewogen)

- -■- Regeerakkoord

R = 0.88

$\Delta$  = -0.13 %-PT NDI